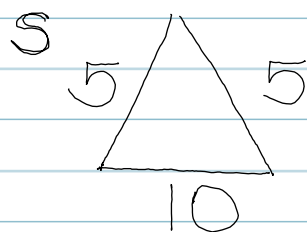
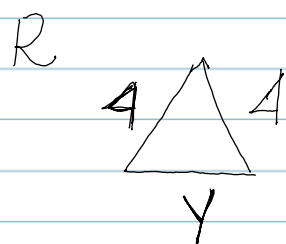


8. Triangles R and S are similar triangles. Find the value of y.



Similar  $\Delta$ 's are proportional

$$\frac{y}{4} = \frac{10}{5}$$

$$\cancel{\frac{y}{4}} = \frac{10}{\cancel{5}}$$

$$\frac{5y}{5} = \frac{40}{5}$$

$$y = 8$$