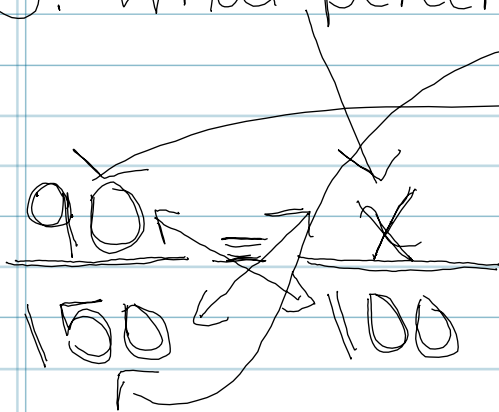


3. What percent of 150 is 90?



Step 1 - use proportion

$$\boxed{\begin{array}{l} \text{is} = \frac{\%}{100} \\ \text{of} \end{array}}$$
 by replacing

given values

$$90(100) = 150(x)$$

$$\underline{9000} = \underline{150x}$$

$$\frac{9000}{150} = x$$

Step 2 - cross multiply
and divide by the
number in front of the
variable

$$\boxed{60\%}$$

of 150 is 90.