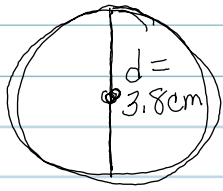


3.



$$C = d \cdot \pi$$

$$C = 3.8 \text{ cm} \cdot \pi$$

$$C = 3.8 \text{ cm} \cdot 3.14$$

$$C = 11.932 \text{ cm}$$

→ ① Circumference formula
 $C = d \cdot \pi$

→ ② Substitute diameter
in formula

→ ③ Substitute 3.14 for π