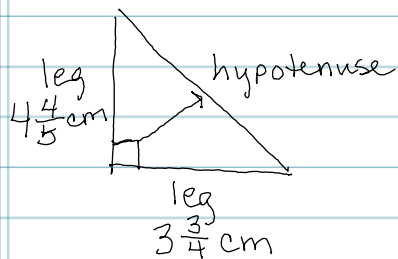


10.



→ ① Formula for area of a triangle

$$A = \frac{1}{2} \cdot b \cdot h$$

$$A = \frac{1}{2} b h$$

$$= \frac{1}{2} \cdot 3\frac{3}{4} \text{ cm} \cdot 4\frac{4}{5} \text{ cm}$$

$$= \frac{\textcircled{1}}{2} \cdot \frac{\textcircled{3}}{4} \text{ cm} \cdot \frac{\textcircled{2}}{5} \text{ cm}$$

→ ② Change the mixed numbers to improper fractions

$$\frac{9}{1} \text{ cm}^2$$

→ ③ Reduce/cancel a numerator with a denominator

$$9 \text{ cm}^2$$

→ ④ Multiply numerators
Multiply denominators