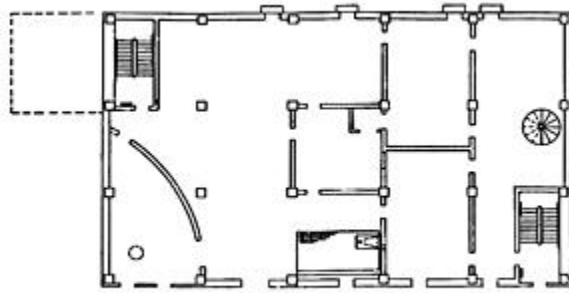


Burn Building

The Live Fire Structure is a five story, 21,000 square foot burn building, which is currently the largest of its type in the United States. This structure contains three live burn floors, and 14 interior "burn areas".

The burn rooms range in size from 12'x14' to 20'x20' to 40'x20' to 90'x30'.



FIRST LEVEL FLOOR PLAN

There is an interior area designed and engineered for fires involving combustible liquid, this generates heavy smoke conditions similar to commercial, processing, or electrical equipment fires. The lower level was constructed to simulate areas of a nuclear reactor building.

The burn building also houses a pitched-roof ventilation training area, a 5-story vertical confined

space shaft, and an 1800 square foot smoke maze. It includes operational sprinkler and standpipe systems, an emergency alarm and communication system, emergency smoke evacuation system, and pressurized stairways.

The building was constructed to comply with all NFPA 1402 recommendations. The large mass of the structure allows multiple evolutions to be conducted simultaneously.